

DS-2DE5174-AE

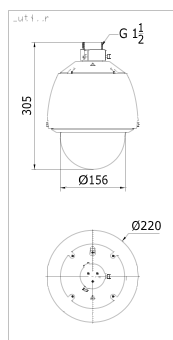
1.3MP PTZ Dome Network Camera



Key features

- 1/3" Progressive Scan CMOS
- 1280 x 960 HD resolution
- 20X optical zoom, 16X digital zoom
- True Day/Night, 3D DNR, Digital WDR
- 3D intelligent positioning
- Support 24VAC / PoE+ power supply

Dimensions



Accessories



DS-2DE5174-AE	
Camera	
Image Sensor	1/3" Progressive Scan CMOS
Effective Pixel	1320K pixels
Min. Illumination	Color: 0.05Lux@(F1.4, AGC ON), B/W: 0.01Lux@(F1.4, AGC ON)
White Balance	Auto / Manual / ATW / Indoor / Outdoor / Daylight lamp / Sodium lamp
AGC	Auto / Manual
S / N Ratio	≥ 50dB
Digital Noise Reduction	3D DNR
Backlight Compensation	BLC
Wide Dynamic Range	128X Digital WDR
Shutter Speed	1 ~ 1/10,000s
Day & Night	IR Cut Filter
Digital Zoom	16X
Focus Mode	Auto / Semiautomatic / Manual
Lens	
Focal Length	4.7 ~ 94.0mm, 20x
Zoom Speed	Approx. 3s (Optical Wide-Tele)
Angle of View	58.3 ~ 3.2 degree (Wide-Tele)
Min. Working Distance	10 ~ 1,000mm (Wide-Tele)
Aperture Range	F1.4 ~ F3.5
Pan and Tilt	
Pan / Tilt Range	Pan: 360° endless; Tilt: -5° ~ 90° (Auto Flip)
Pan / Tilt Speed	Pan Manual Speed: 0.1° ~ 250°/s, Pan Preset Speed: 300°/s Tilt Manual Speed: 0.1° ~ 150°/s, Tilt Preset Speed: 200°/s
Proportional Zoom	Rotation speed can be adjusted automatically according to zoom multiples
Number of Preset	256
Patrol	8 patrols, up to 32 presets per patrol
Park action	Pattern / Pan scan / Tilt scan / Random scan / Frame scan / Panorama scan
Input/ Output	
Audio Input	Optional audio input (Line input), 2 ~ 2.4V(p-p); output impedance: 1KΩ±10%
Audio Output	Line level, impedance: 600 Ω
Network	
Ethernet	10Base-T / 100Base-TX, RJ45 connector
Max. Image Resolution	1280x960
Frame Rate	60Hz: 30fps(1280x960), 30fps(1280x720)
Image Compression	H.264 / MPEG4
Audio Compression	G.711u / G.711a / G.726
Protocols	IPv4/IPv6, HTTP, HTTPS, 802.1x, QoS, FTP, SMTP, UPnP, SNMP, DNS, DDNS, NTP, RTSP, RTP, TCP/IP, UDP, IGMP, ICMP, DHCP, PPPoE
Simultaneous Live View	Up to 6
Streams	Dual Streams
Mini SD Memory Card	Micro SD Slot, up to 32GB
User/Host Level	Up to 32 users, 3 Levels: Administrator, Camera control, Live view only
Security Measures	User authentication (ID and PW), Host authentication (MAC address)
Integration	
Application programming	Open-ended API, support Onvif, PSIA and CGI
Web Browser	IE 7, IE 8, IE 9, Chrome 8+, Firefox 3.5+, Safari 5+
General	
RS-485 Protocols	HIKVISION, Pelco-P, Pelco-D, self-adaptive
Power	24 VAC/PoE+ Max. 22W/14W (Heater On / Off)
Working Temperature	Outdoor dome: -30°C ~ 65°C (-22°F ~ 149°F)
Humidity	90% or less
Protection Level	IP66 standard (outdoor dome) TVS 4,000V lightning protection, surge protection and voltage transient protection
Dimensions	Φ220x305mm (Φ8.66"x12.02") (Outdoor)
Weight (approx.)	5Kg (11.02lbs)
Mount Option (for outdoor models)	Long-arm wall mount: WMP-L; Corner mount: WMP-L + CMP; Pole Mount: WMP-L + PMP

Order models

DS-2DE5174-AE