

# DS-2DE5184-A

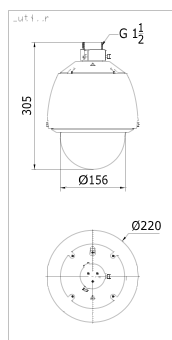
## 2MP PTZ Dome Network Camera



### Key features

- 1/2.8" Progressive Scan CMOS
- 1080P Full HD resolution
- 20X optical zoom, 16X digital zoom
- True Day/Night, 3D DNR, Digital WDR
- 3D intelligent positioning
- Support 24VAC / PoE+ power supply

### Dimensions



### Accessories



DS-1256ZJ  
(wall mount)

| DS-2DE5184-A            |  |
|-------------------------|--|
| <b>Camera</b>           |  |
| Image Sensor            | 1/2.8" Progressive Scan CMOS   |
| Effective Pixel         | 2230K pixels   |
| Min. Illumination       | Color: 0.05Lux@F1.6, B/W: 0.01Lux@F1.6   |
| White Balance           | Auto / Manual /ATW/Indoor/Outdoor/Daylight lamp/Sodium lamp  |
| AGC                     | Auto / Manual  |
| S / N Ratio             | ≥ 50dB   |
| Digital Noise Reduction | 3D DNR   |
| Backlight Compensation  | BLC  |
| Wide Dynamic Range      | 128X Digital WDR   |
| Shutter Speed           | 1 ~1/10,000s   |
| Day & Night             | IR Cut Filter  |
| Digital Zoom            | 16X  |
| Focus Mode              | Auto / Semiautomatic / Manual  |
| <b>Lens</b>             |  |
| Focal Length            | 4.7 ~ 94mm, 20x  |
| Zoom Speed              | Approx 3s(Optical Wide-Tele)   |
| Angle of View           | 58.3 ~3.2 degree (Wide-Tele)   |
| Min. Working Distance   | 10 ~1000mm(Wide-Tele)  |
| Aperture Range          | F1.6 ~F3.5   |
| <b>Pan and Tilt</b>     |  |
| Pan / Tilt Range        | Pan: 360° endless;Tilt: -5° ~90° (Auto Flip)   |
| Pan / Tilt Speed        | Pan Manual Speed: 0.1° ~250° /s, Pan Preset Speed: 300° /s<br>Tilt Manual Speed: 0.1° ~150° /s, Tilt Preset Speed: 200° /s |
| Proportional Zoom       | Rotation speed can be adjusted automatically according to zoom multiples   |
| Number of Preset        | 256  |
| Patrol                  | 8 patrols, up to 32 presets per patrol   |
| Park action             | Pattern/Pan scan/Tilt scan/Frame scan/Panorama scan/Random scan  |
| Power-off Memory        | Support  |
| <b>Input/ Output</b>    |  |
| Audio Input             | Optional audio input (Line input), 2 ~ 2.4V[p-p]; output impedance: 1KΩ, ±10%  |
| Audio Output            | Line level, impedance: 600Ω  |
| <b>Network</b>          |  |
| Ethernet                | 10Base-T / 100Base-TX, RJ45 connector  |
| Max. Image Resolution   | 1920×1080  |
| Frame Rate              | 60Hz: 30 fps (1920×1080), 30 fps (1280×960) , 30 fps (1280×720)  |
| Image Compression       | H.264/ MPEG4   |
| Audio Compression       | G.711u /G.711a /G.726  |
| Protocols               | IPv4/IPv6, HTTP, HTTPS, 802.1x, Qos, FTP, SMTP, UPnP, SNMP, DNS, DDNS, NTP, RTSP, RTP, TCP, UDP,IGMP, ICMP, DHCP, PPPoE    |
| Simultaneous Live View  | Up to 6  |
| Streams                 | Dual Streams   |
| Mini SD Memory Card     | Micro SD Slot, up to 32GB  |
| User/Host Level         | Up to 32 users,3 Levels: Administrator, Camera control, Live view only   |
| Security Measures       | User authentication (ID and PW), Host authentication (MAC address), IP address filtering                                   |
| <b>Integration</b>      |  |
| Application programming | Open-ended API, support Onvif, PSIA and CGI  |
| Web Browser             | IE 7, IE 8, IE 9, Chrome 8 +, Firefox 3.5 +, Safari 5 +  |
| <b>General</b>          |  |
| RS-485 Protocols        | HIKVISION, Pelco-P, Pelco-D, self-adaptive   |
| Power                   | 24 VAC / PoE+<br>Max. 22W/14W (Heater On / Off)  |
| Working Temperature     | Outdoor dome: -30° C ~ 65° C(-22° F ~ 149° F)  |
| Humidity                | 90% or less  |
| Protection Level        | IP66 standard (outdoor dome)<br>TVS 4,000V lightning protection, surge protection and voltage transient protection         |
| Dimensions              | Φ220×305mm (Φ8.66" ×12.02" )(Outdoor)  |

### Order models

DS-2DE5184-A: 24VAC, outdoor